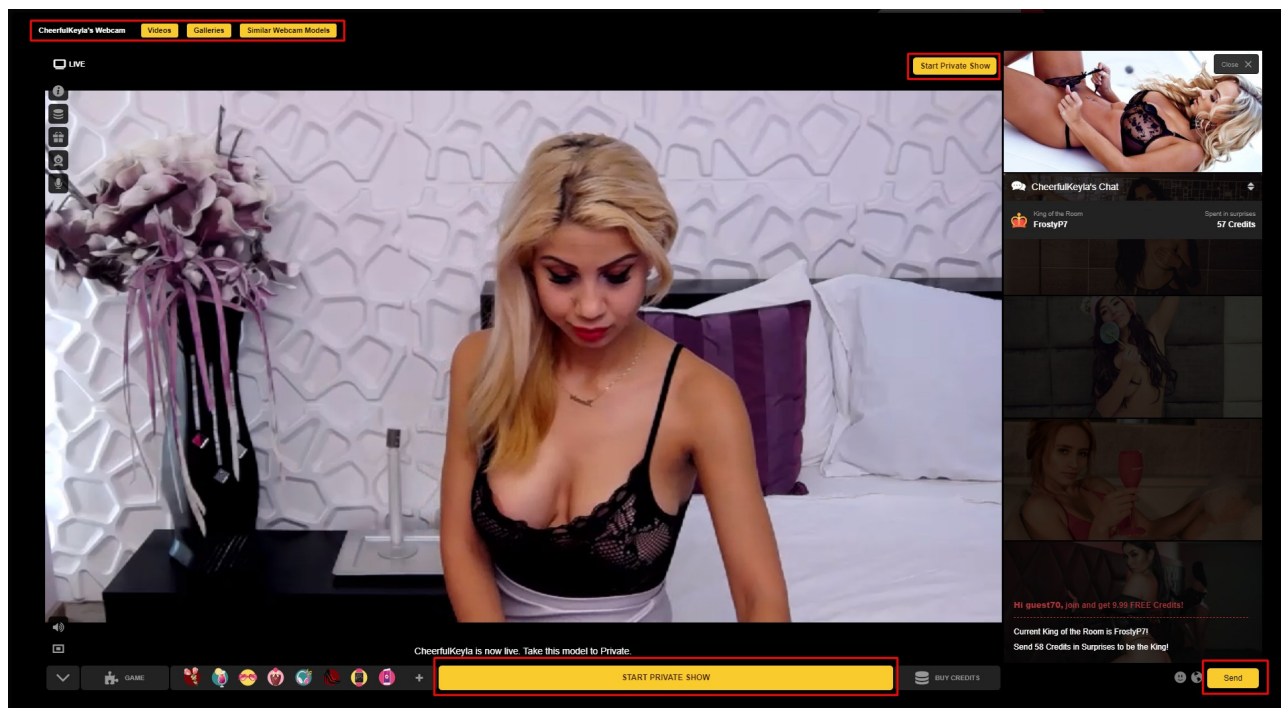


# AWEmpire Blacklabel Mechbunny Integration Guide

As of version 6.2.3, the AWEmpire Blacklabel API is fully integrated into the Mechbunny Tube Script.

## Activation on default templates:

1. In the admin area, under the “External” tab in the navigation, you will find “AWEmpire Blacklabel”. Click this to access the configuration
2. Set “Enable Blacklabel API” to True.
3. Enter Blacklabel API Key provided to you by AWEmpire.
4. Enter your whitelabel url (full url, including https so “<https://www.WhitelabelName.lsl.com>”
5. Select the language of your website.
6. Select if you want Translation API to be used.
7. Select number of performers you want displayed on the front end per-page (<https://yoursite.com/live-webcams/>)
8. Select main category (girls, boys, tranny, celebrity). The celebrity category is more of a misc category and contains subcategories other than just celebrities.
9. Select subcategories you want to display on your website.
10. Enter primary button foreground and background colors in hex. Foreground color in this context refers to the text. This manipulates the colors of the elements highlighted below.



11. T&C Link color and Toggle color refer to the link colors for the terms of service page.
12. Chmod your `/admin/modules/awempire_blacklabel/config/` directory recursively to 777.

If everything is entered correctly, you can now press save and check if everything worked. If everything is ok, you should see performers listed at <https://yoursite.com/live-webcams/>

## Custom Integrations:

Prior to performing the above steps, the following must be done on a custom site. This will work all the way back to 6.0.0. You will need the 6.2.3 update package from the Mechbunny website.

1. Upload the following files to the includes directory:
  - *ajax.aweblacklabel\_loadgalleries.php*
  - *ajax.aweblacklabel\_loadmaster.php*
  - *ajax.aweblacklabel\_loadmodel.php*
  - *ajax.aweblacklabel\_loadmore.php*
  - *ajax.aweblacklabel\_loadrecommended.php*
  - *ajax.aweblacklabel\_loadvideos.php*
2. Upload the following files to your admin directory:
  - *admin/functions.awempire.php*
  - *admin/modules/awempire\_blacklabel/* (entire directory)
3. Upload the following files from the update to your template directory (**these go in YOUR template directory, not default\_tube2018**):
  - *templates/default\_tube2018/awe\_blacklabel/* (entire directory)
  - *templates/template.aweblacklabel.php*
4. Add the following line to *admin/db.php* above “*modulesInclude()*,” if it does not already exist in the file:  
*include(\$basepath . "/admin/functions.awempire.php");*
5. Insert the following into whatever file contains your *<head>* tag. This is typically *templates/templateName/widgets/widget.header.scripts.php*:  
*<? getTemplate("awe\_blacklabel/template.header\_aweblacklabel.php"); ?>*
6. Copy these *rewriterules* to the bottom of your *.htaccess* (or *httpd.conf*):  

```
### BLACKLABEL AWEMPIRE ###
RewriteRule ^live-webcams/loadMaster/(.*)$
includes/ajax.aweblacklabel_loadmaster.php?id=$1 [QSA]
RewriteRule ^live-webcams/loadModel/(.*)$ includes/ajax.aweblacklabel_loadmodel.php?
id=$1 [QSA]
RewriteRule ^live-webcams/loadVideos/(.*)$
includes/ajax.aweblacklabel_loadvideos.php?id=$1 [QSA]
RewriteRule ^live-webcams/loadGalleries/(.*)$
includes/ajax.aweblacklabel_loadgalleries.php?id=$1 [QSA]
RewriteRule ^live-webcams/loadRecommended/(.*)$
includes/ajax.aweblacklabel_loadrecommended.php?id=$1 [QSA]
RewriteRule ^live-webcams/loadMore/(.*)$ includes/ajax.aweblacklabel_loadmore.php?
listPageId=$1 [QSA]
RewriteRule ^live-webcams/paymentCallback$ index.php?
controller=aweblacklabel&paymentCallback=1 [QSA]
RewriteRule ^live-webcams/$ index.php?controller=aweblacklabel&page=1 [QSA]
RewriteRule ^live-webcams/page([0-9]+).html$ index.php?
controller=aweblacklabel&page=$1 [QSA]
```
7. Insert the following code in your footer at the very bottom of the page. This is typically *template.overall\_footer.php*:  

```
<?php
if($blacklabel['blacklabel_enabled']) { ?>
<div id="aweblacklabelModal" class="modal">
    <p>Loading...</p>
    <a href="#" rel="modal:close">Close</a>
</div>
<style>
```

```

.blocker { z-index: 10; }
.modal {
    max-width: 90% !important;
    width: 90%;
    height: 90% !important;
    background-color: #000000 !important;
}
.modal a.close-modal {
    top: -6px !important;
    right: -6px !important;
}
}
</style>
<?php } ?>

```

8. The code integration portion is now complete. Perform the integration as per the first steps above.
9. Once you have `/live-cams/` displaying, you can begin styling the templates as per your tastes. The important templates are the ones in the “awe\_blacklabel” subdirectory:
  - *template.content\_item\_aweblacklabel.php*: This is the repeating live webcam item, similar to how *content\_item* template works in the tube script.
  - *template.content\_item\_photo.php*: Repeats in “galleries” tab in the modal popup.
  - *template.content\_item\_video.php*: Repeats in “videos” tab in the modal popup.
  - *template.header\_aweblacklabel.php*: Contains javascript calls, you probably don’t need you edit this.
  - *template.modelblack\_aweblacklabel.php*: An example for how to display live cam models on other locations of the site besides `/live-webcams/`.
  - *template.sidebar\_aweblacklabel.php*: The sidebar for `/live-cams/` that contains the category listing and search. You may need to include this on your *overall\_header* template as per the example in the *default\_tube2018* template.